



# ADULARIA

PRECISION CANCER IMMUNOTHERAPY

Inspired by Nature's blueprint

# ADULARIA AT A GLANCE

Founded 2022



Developing a small molecule for a novel cancer immunotherapy target

Pre-clinical stage spin-off company from the University of Zurich

Team of

8

Employees

Funding

>40Y

Comb. Immunology experience

> CHF 6M

non-dilutive funding

## Recognition & awards



## Partners & supporters



## Key milestones

Apr. '22 — Onboarding Wyss Zurich accelerator

Nov. '23 — New I-O target validated

Q3 '24 — First hit compounds developed

Q2 '25 — Patents filed

Q1 '26 — Manufacturing scale-up

Q2. '26 — IND tox studies

Q2. '27 — IND filing

# THE UNMET CHALLENGES IN CANCER IMMUNOTHERAPY

Up to 85%

Patients do not respond to immune checkpoint inhibitors

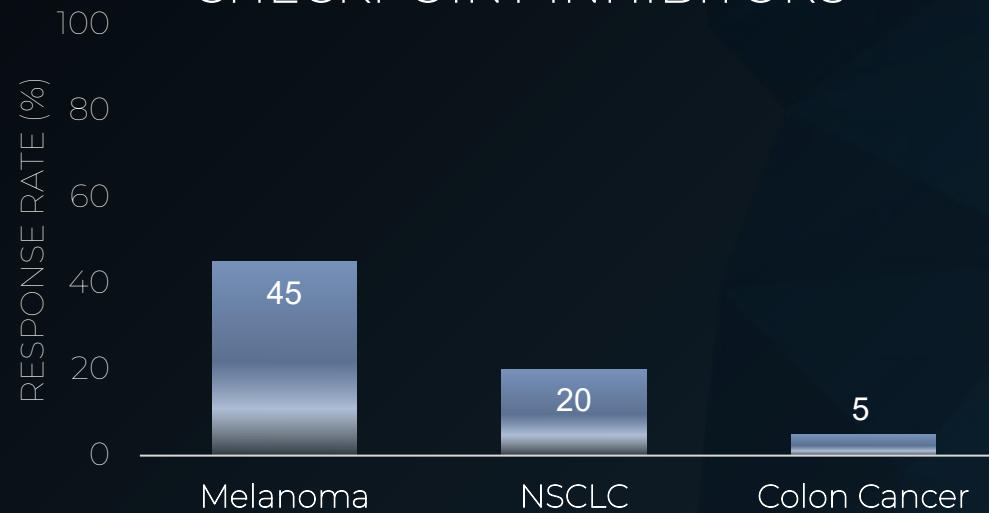
Pilard C, et al., BJC (2021)

< 20%

Responders reach long-term remission

Robert, C. et al., Nat. Comm. (2020)

RESPONSE RATES TO IMMUNE CHECKPOINT INHIBITORS

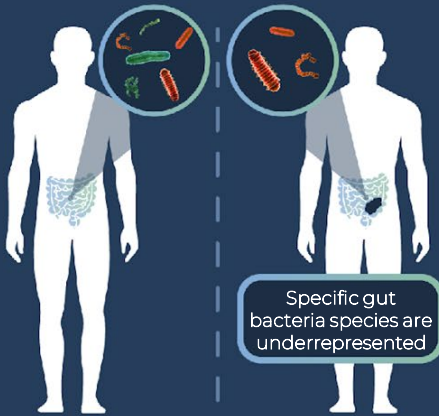


New approaches are needed to enhance immune activation & effectiveness

# SPECIFIC GUT BACTERIA ARE REDUCED IN CANCER PATIENTS

## Clinical observation

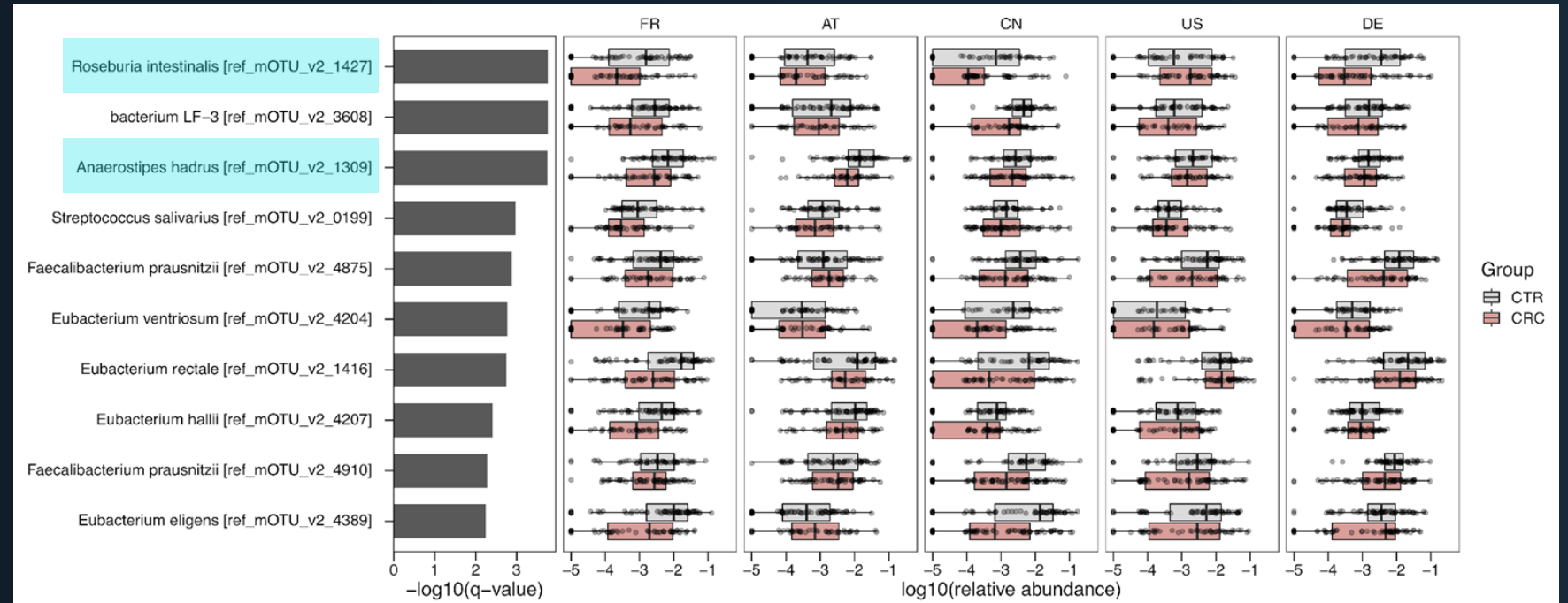
Selection of bacteria species associated with healthy phenotype



Healthy person

Cancer patient

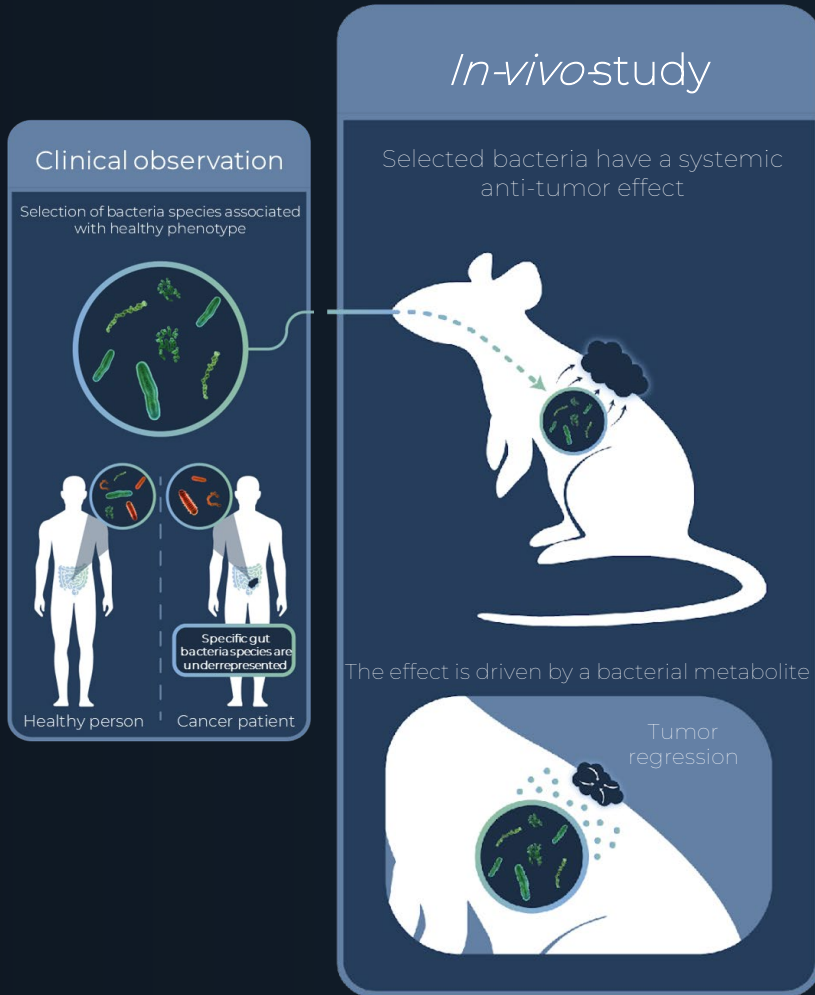
Specific gut bacteria species are underrepresented



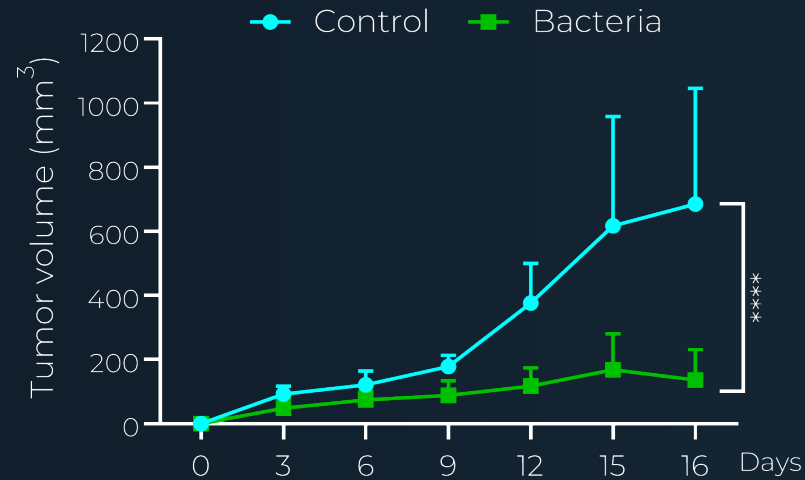
*A. hadrus* and *R. intestinalis* are reduced across different cancer types and geographic locations

Is there a causal relationship that can be exploited?

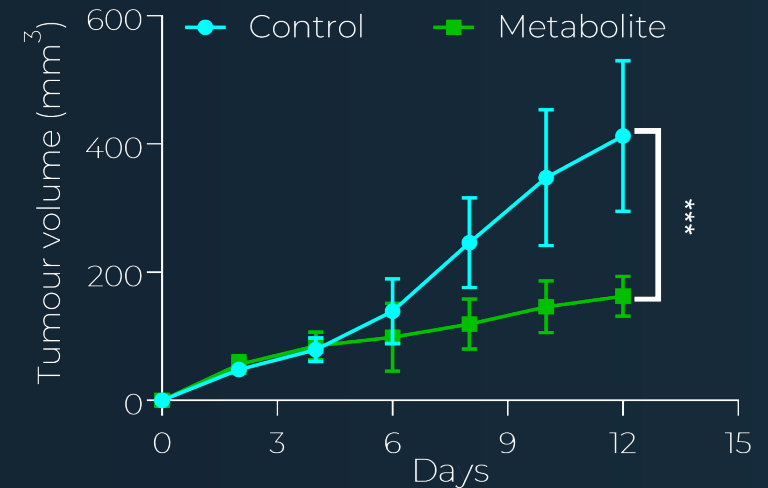
# ANTI-TUMOR EFFECT DRIVEN BY A BACTERIAL METABOLITE



Oral application of bacteria

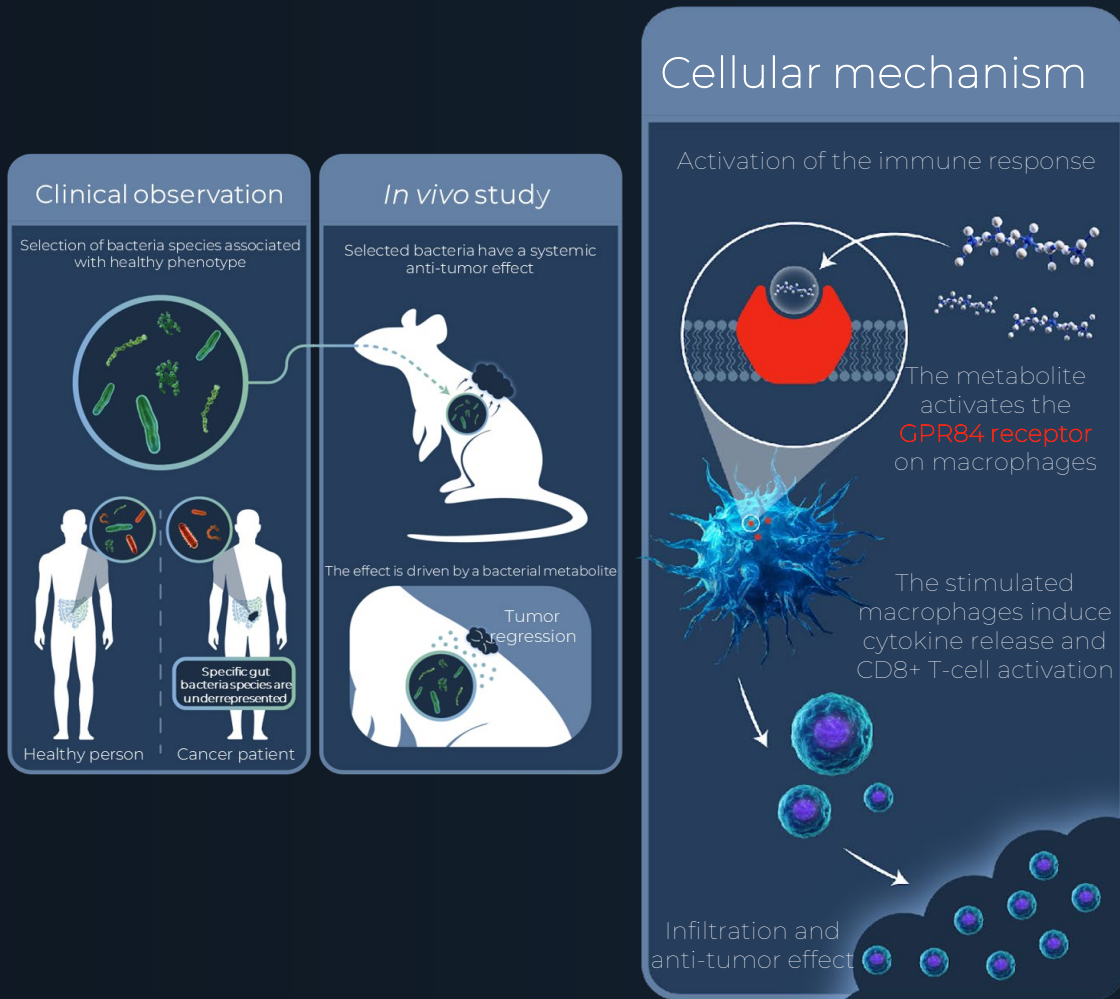


i.p. application of bacterial metabolite

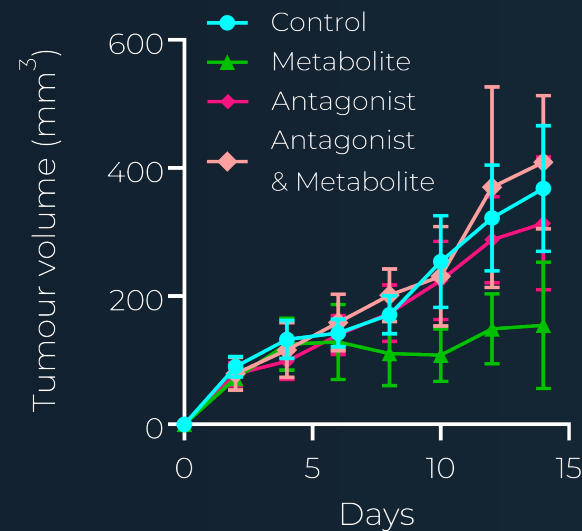


Montalban-Arques et al., 2021. *Cell Host & Microbes*  
Katkeviciute et al., 2025. *Cell Reports*

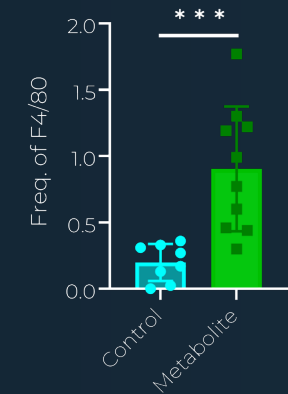
# GPR84 - A NOVEL IMMUNO-ONCOLOGY TARGET



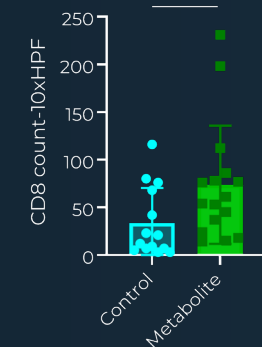
Metabolite acts through GPR84



IL12+ Macrophages in tumor

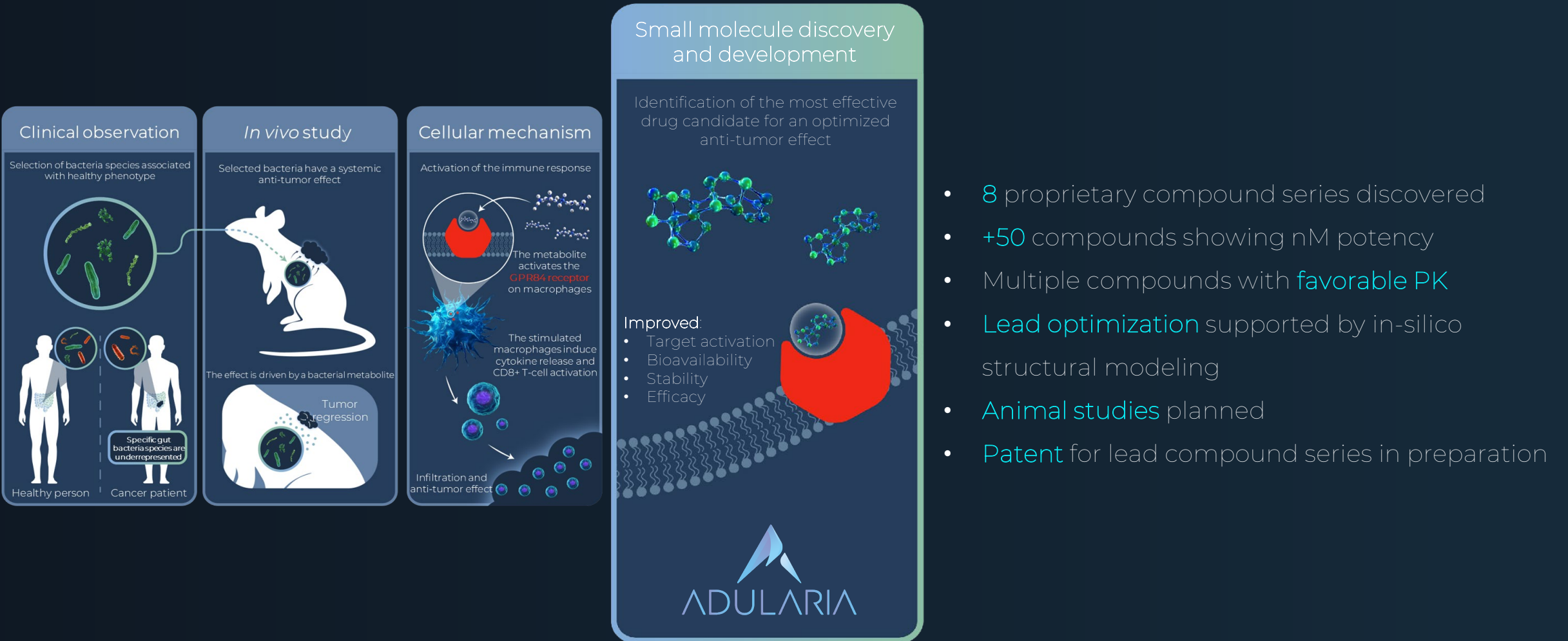


CD8+ T-cells in tumor



GPR84 activation in macrophages triggers cytokine release, CD8+ T cell activation, and tumor infiltration

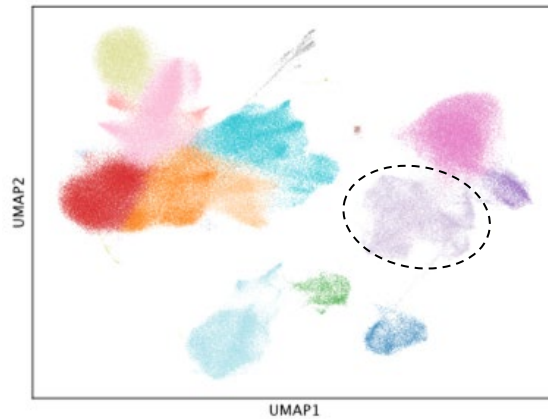
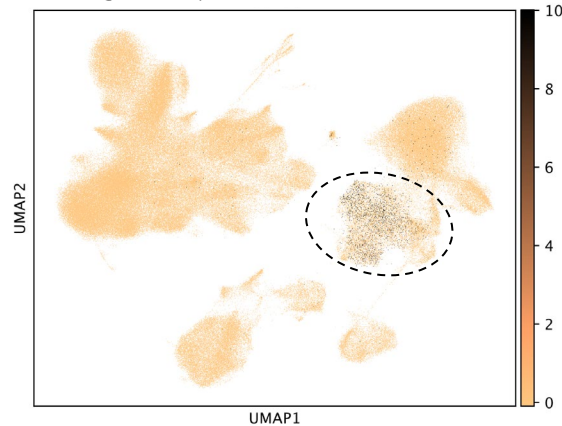
# A FIRST-IN-CLASS GPR84 TARGETING SMALL MOLECULE THERAPY



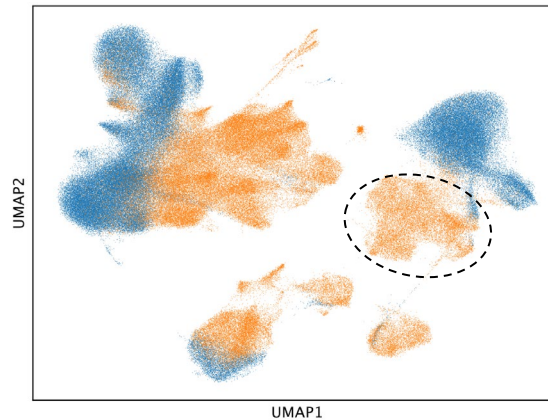
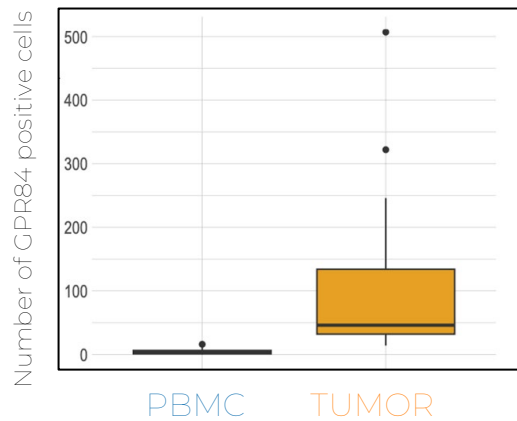
- 8 proprietary compound series discovered
- +50 compounds showing nM potency
- Multiple compounds with favorable PK
- Lead optimization supported by in-silico structural modeling
- Animal studies planned
- Patent for lead compound series in preparation

# GPR84 IS PREDOMINANTLY EXPRESSED IN TUMOR-RESIDING MACROPHAGES

Target expression



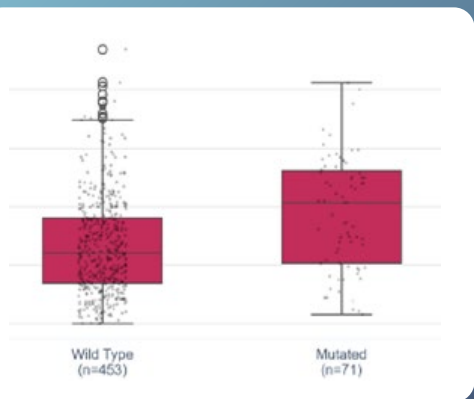
- CD8+T-cells
- CD4+T-cells reg.
- CD8+T-cells (NK-like)
- naive T-cells
- NK-cells
- NK-cells (CD56-dim)
- T-cells
- Fibroblasts
- Endothelial
- Classical monocyte
- Mature monocyte
- Non-class. monocyte
- CXCL9+ macrophage
- pDCs
- B-cells
- Plasma cells
- unkown



- PBMC
- TUMOR

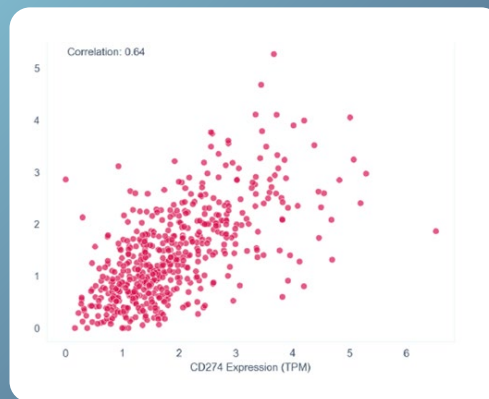
scRNA sequencing analysis from melanoma patients

# HUMAN DATA ANALYSIS REVEALS MULTIPLE POTENTIAL CANCER TARGET POPULATIONS



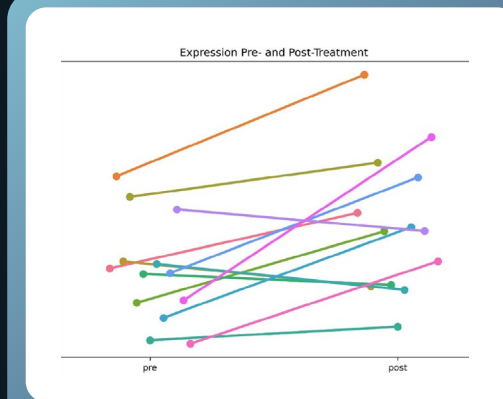
Co-expression with clinically validated biomarkers /mutations

GPR84 correlates with BRAF mutation in CRC and Melanoma



Positive correlation with immune checkpoints

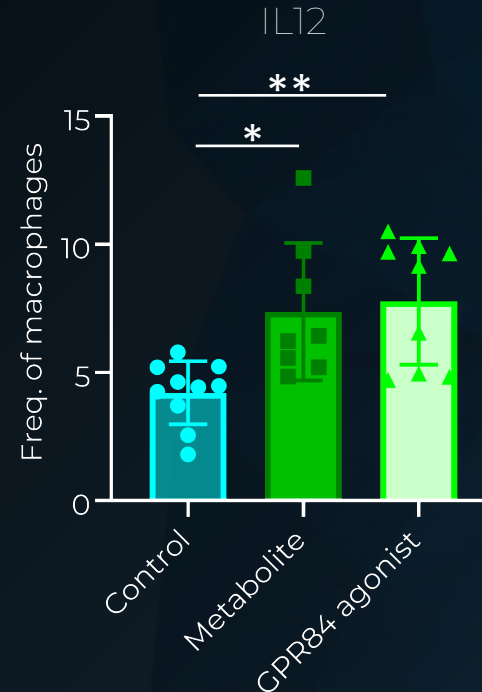
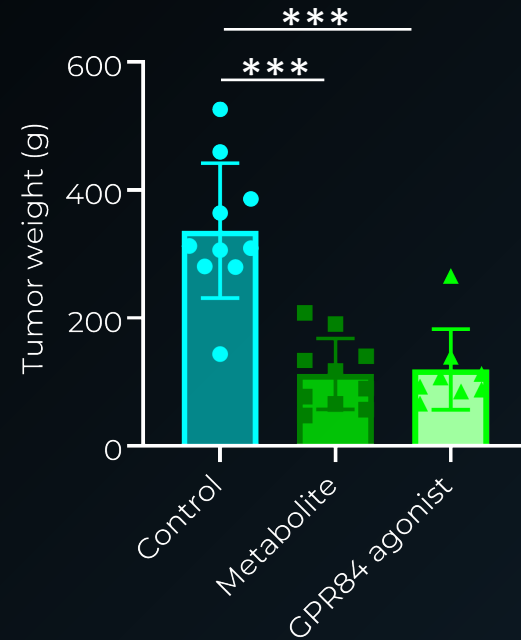
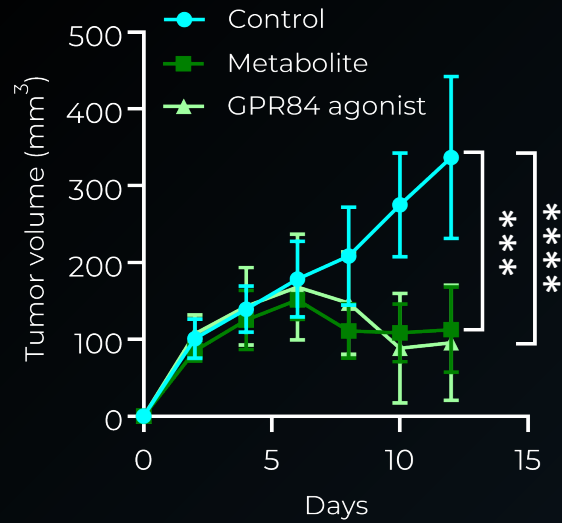
GPR84 expression correlates with expression of immune checkpoints



Influence of SoC treatment

GPR84 is upregulated in immunotherapy resistant NSCLC patients

# IN VIVO PROOF OF CONCEPT

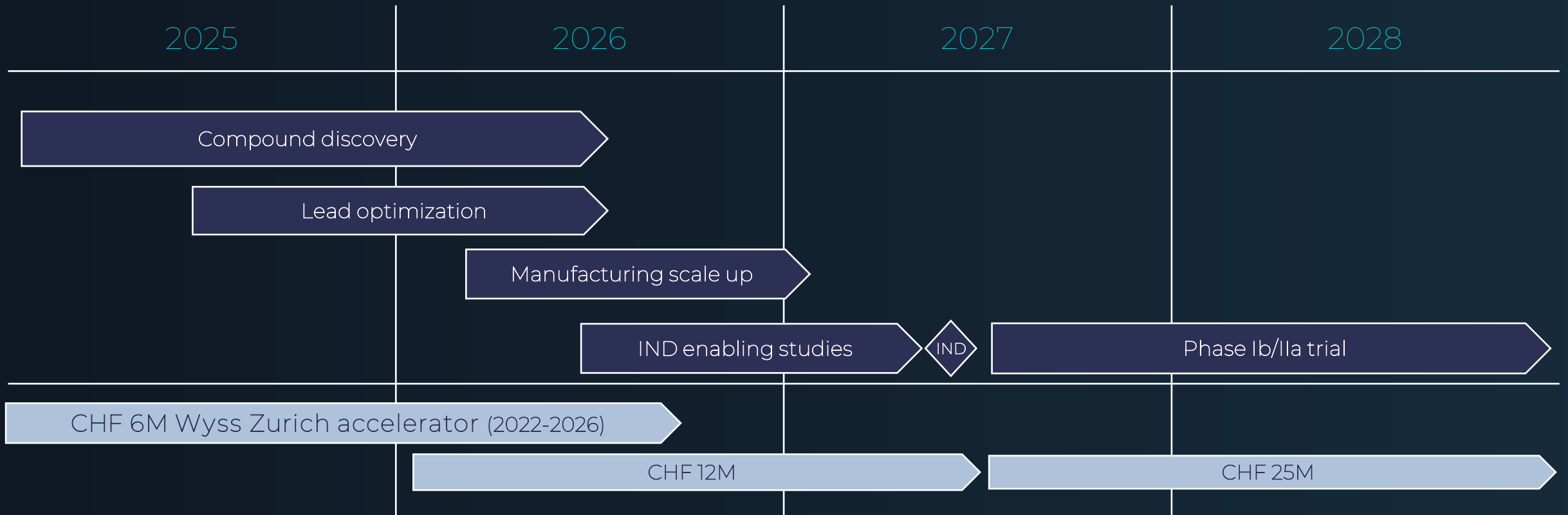


A known agonist for GPR84 shows comparable anti-tumor effect to the bacteria-derived metabolite

# COMPETITIVE ADVANTAGE

- 01 Leveraging a natural mechanism of host-microbial interaction
- 02 Novel immune-regulatory pathway for oncology
- 03 Tumor-targeted immunotherapy
- 04 Proprietary GPR84 structural information aiding molecule design
- 05 Experienced team in Oncology, Immunology & Drug Development
- 06 Potential synergies with immune checkpoint inhibitors

# FROM HIT TO CLINIC: THE PATH TO PATIENT IMPACT



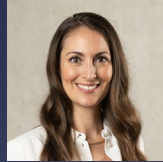
- **Next milestone:** Having an IND ready compound by Q2 2027
- **Funding needs:** CHF 12M to support IND-enabling studies and manufacturing scale-up



Non-confidential deck

# IMMUNO-ONCOLOGY EXPERTISE MEETS INDUSTRY KNOW-HOW

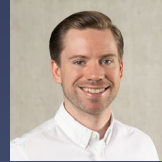
## Operational Team



CEO, co-founder & board member  
Ana Montalban-Arques, PhD.



CSO & co-founder  
Egle Katkeviciute, PhD.



COO & co-founder  
Philipp Busenhardt PhD.

## Board of Directors



Chairman  
Andrin Oswald, MD.



Board member  
Roman Fleck, PhD.



Head of AI, Bioinformatics & CADD  
Martin Schwill PhD.



Head of RA & QA  
Ruxandra Popescu, MPharm.



Consulting Med. Chem  
Charles H. Fabritius, PhD.



## Advisors



Scientific, co-founder  
Michael Scharl, Prof.



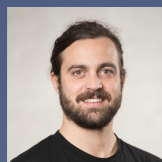
Drug development  
Terence Kelly, PhD.



Clinical Trials  
Alexander Knuth, Prof.



Research Scientist  
Francesca Ferraro, PhD.



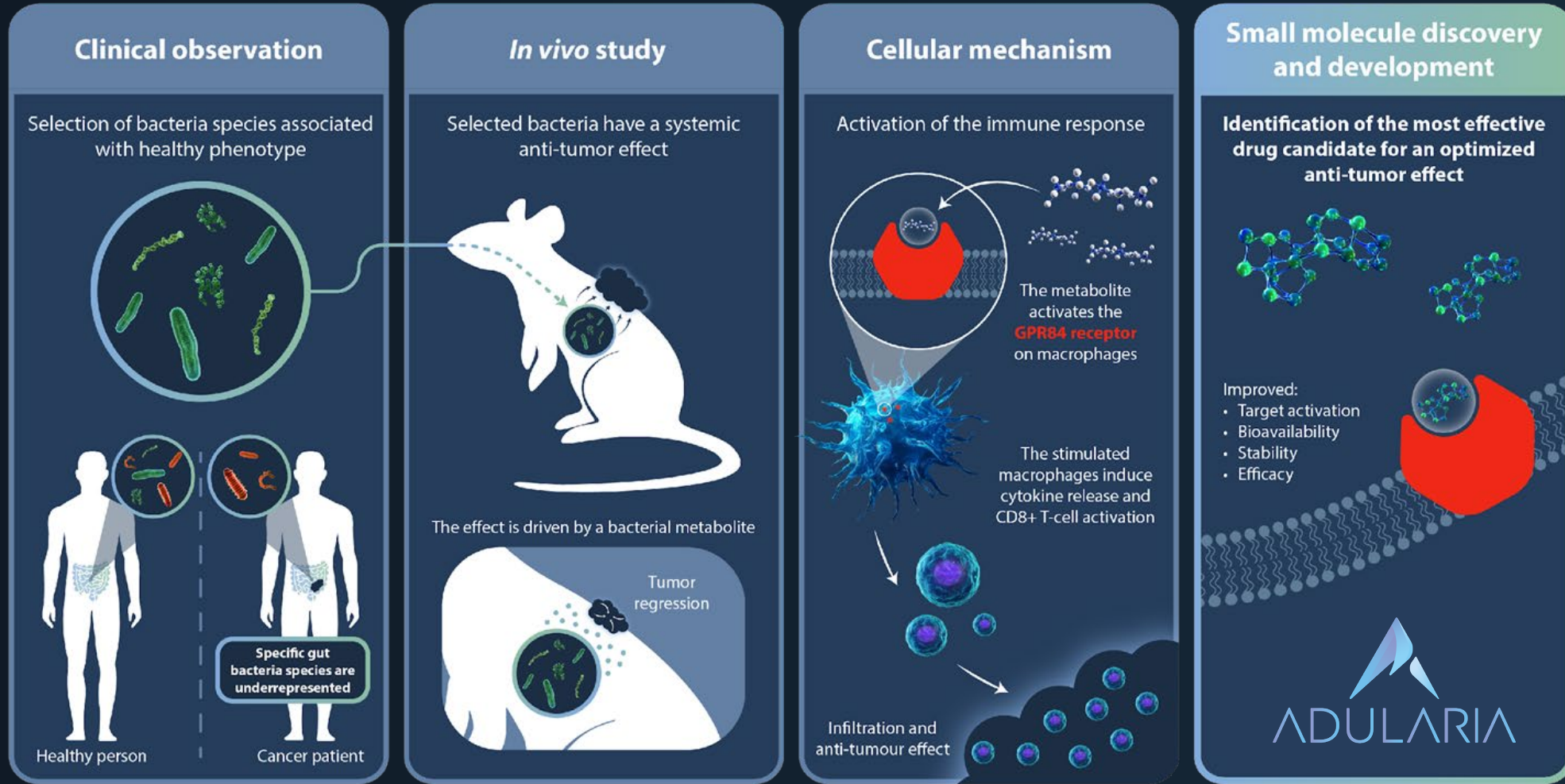
Drug Discovery Senior Scientist  
Vasco Campos, PhD.



Research Scientist  
Julija Djordjevic, PhD.



# INSPIRED BY NATURE. ENGINEERED FOR PRECISION. FOCUSED ON PATIENTS



# CONNECT WITH US

Dr. Ana Montalban Arques, CEO & co-founder

Email: [ana.montalban-arques@adularia.ch](mailto:ana.montalban-arques@adularia.ch)

---

[www.adularia.ch](http://www.adularia.ch)

